



The preferred worldwide equipment MITSUBISHI MOG -the way to serve customers best available Products with the best possible value best quality Service Support with the sense of urgency beyond the customer's expectation.

Your Mitsubishi MOG Gen Set dealer can advise you the right selection of Gen Set for your application, deliver and install the units properly, and provide daily maintenance training, as well as the preventive maintenance on demand, to support higher productivity in economical way.

Well trained and experienced professionals strive for excellence in all they do.



Mitsubishi Heavy Industries, Ltd. serves customers by providing continually improved products. Therefore specifications and some materials may be changed without notice.



MITSUBISHI HEAVY INDUSTRIES, LTD.

Engine Sales Department
16-5, Konan 2-chome, Minato-ku, Tokyo 108-8215, Japan
Phone:81-3-6716-4771 Fax:81-3-6716-5854



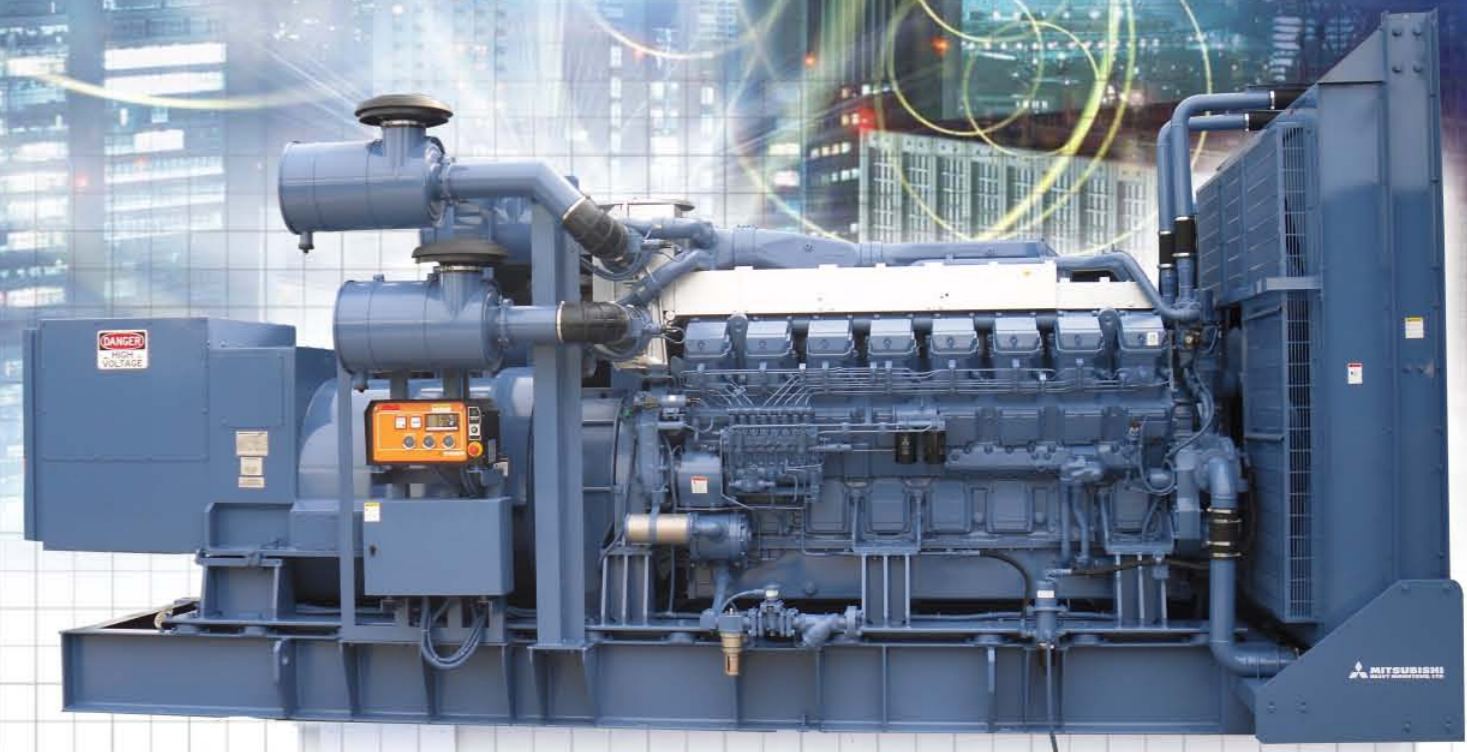
HOP SHING ENGINEERING CO., LTD.
Address: Unit 16, 8/F, Hing Wah Centre, 82-84,
Tokwawan Road, Kowloon, Hong Kong.
Tel: 00852-27153952 Fax: 00852-27613780

MITSUBISHI DIESEL GENERATOR SET

MOG

SERIES

Updated



MITSUBISHI HEAVY INDUSTRIES, LTD.

Our Technologies, Your Tomorrow

RELIABILITY AND QUALITY IN POWER GENERATION

The growing strength of the Mitsubishi brand name:
MITSUBISHI MOG POWER UNIT PACKAGE



POWER UNIT
PACKAGE

MOG SERIES

STANDARD CONFIGURATION

DIESEL ENGINE Engine-Driven fan Desert -50°C radiator
Air motor Cylinder heater Heavy duty air inlet air filter
Wood word EG3P Actuator Oil filter
Electric / manual air inlet valve Diesel fuel filter
Fire-type muffler engine exhaust flexible joints (bellows)

AC GENERATOR 600V AC generator Alternator air inlet air filter
Air pressure switch Space heater
RTD (Pt 100) for Temperatures measurement

CONTROLLER MOG 520 GCP Intelligent controller
Back-pressure gauge Oil pressure gauges
Water temperature table Tachometer

RACK Frame / base Shock absorber pad

OPTIONS AND ACCESSORIES Speed controller Woodward 2301ALSSC
Pressure controller K65-12B

MOG MOG POWER
UNIT PACKAGE

TECHNICAL
SPECIFICATIONS

MODEL	MOG1200	MOG1500
Country of Origin	Singapore/Vietnam	Singapore/Vietnam
Rated output parameters	3 Ø 3W 600V 50Hz 1500RPM	3 Ø 3W 600V 50Hz 1500RPM
Normal output (At 50° c ambient temperature , 1000 m above sea level)	1600KVA 1040Kw P.F. 0.65	1971.5KVA 1380Kw P.F. 0.70
Voltage regulation	± 0.5%	± 0.5%
Voltage adjustment range	± 5%	± 5%
No-load voltage waveform distortion	≤ 10%	≤ 10%
Engine type	S12R-PTA-S	S16R-PTA-S
Engine Brand	MITSUBISHI	MITSUBISHI
Engine power (With fan 40° c ambient temperature , 1500m above sea level)	1143mKW	1523mKW
Inlet	After Turbo cool	After Turbo cool
Cylinder x stroke	170 x 180	170 x 180
Total displacement	49	65.4
Pressure ratio	14:1	14:1
Start mode	Air motor (optional DC24 electric motors)	Air motor (optional DC24 electric motors)
Actuator	Wood Word EG3P (driving current 400MA)	Wood Word EG3P (driving current 400MA)
Fuel consumption (100% load)	253L/Hr (5% error)	356L/Hr (5% error)
Lubricating oil consumption	1.3g/Kw.Hr	1.3g/Kw.Hr
Oil capacity	180L	230L
Coolant capacity(Including radiator)	400L	550L
Combustion air	97 m ³ /min	127 m ³ /min
Maximum ventilation resistance	100Pa	100Pa
Exhaust gas temperature	520 °C	520 °C
Exhaust gas flow	256 m ³ /min	337 m ³ /min
Exhaust back pressure	6Kpa	6Kpa
The highest speed	2100RPM	2100RPM
Alternator type / brand	KT-FQ656/KATO	KT-FR657/KATO
Alternator rated parameters	1600KVA/600V/50Hz/0.65	1978.6KVA/600V/50Hz/0.70
Insulation level / temperature rise	Class H / 70°C	Class H / 70°C
Pole / winding pitch / connection	4P/2/3 Pitch /Y connection	4P/2/3 Pitch /Y connection
Excitation mode	Brushless self-excited	Brushless self-excited
Overload capacity	150%/15S (rated speed)	150%/15S (rated speed)
Cooling way	Axial fan, with air inlet filter	Axial fan, with air inlet filter
Unit size		
Length	5535mm	6260mm
Width	2160mm	2490mm
Width	2160mm	2490mm
Height	2610mm	2915mm
Gross weight(net weight)	14300Kgs	16900Kgs